



Beaufort County Public Works

Stormwater Infrastructure

Project Summary

Project Summary: Sams Point Road

Narrative Description of Project:

Project improved 112 L.F. of drainage system. Grubbed and cleared 112 L.F. of outfall ditch and constructed 112 L.F. of swale. Repaired washout. Hydroseeded for erosion control.

Completion: Jul-11

2012-004 / Sams Point Road	Labor Hours	Labor Cost	Equipment Cost	Material Cost	Contractor Cost	Indirect Labor	Total Cost
AUDIT / Audit Project	0.5	\$10.24	\$0.00	\$0.00	\$0.00	\$0.00	\$10.24
HAUL / Hauling	14.5	\$304.01	\$193.00	\$554.74	\$0.00	\$0.00	\$1,051.75
HYDR / Hydroseeding	8.0	\$164.60	\$41.16	\$152.50	\$0.00	\$0.00	\$358.26
LM / Loading Materials	0.5	\$10.71	\$14.88	\$3.41	\$0.00	\$0.00	\$29.00
ODGRB / Outfall ditch - grubbed	32.0	\$734.55	\$202.02	\$59.78	\$0.00	\$0.00	\$996.35
RPWO / Repaired Washout	3.0	\$68.73	\$27.11	\$13.64	\$0.00	\$0.00	\$109.48
SCON / Swale - Constructed	12.0	\$265.20	\$74.35	\$53.20	\$0.00	\$0.00	\$392.75
Indirect Labor, Services and Supplies	0.0	\$0.00	\$0.00	\$0.00	\$0.00	\$1,062.13	\$1,062.13
2012-004 / Sams Point Road Sub Total	70.5	\$1,558.04	\$552.51	\$837.27	\$0.00	\$1,062.13	\$4,009.94
Grand Total	70.5	\$1,558.04	\$552.51	\$837.27	\$0.00	\$1,062.13	\$4,009.94

Before

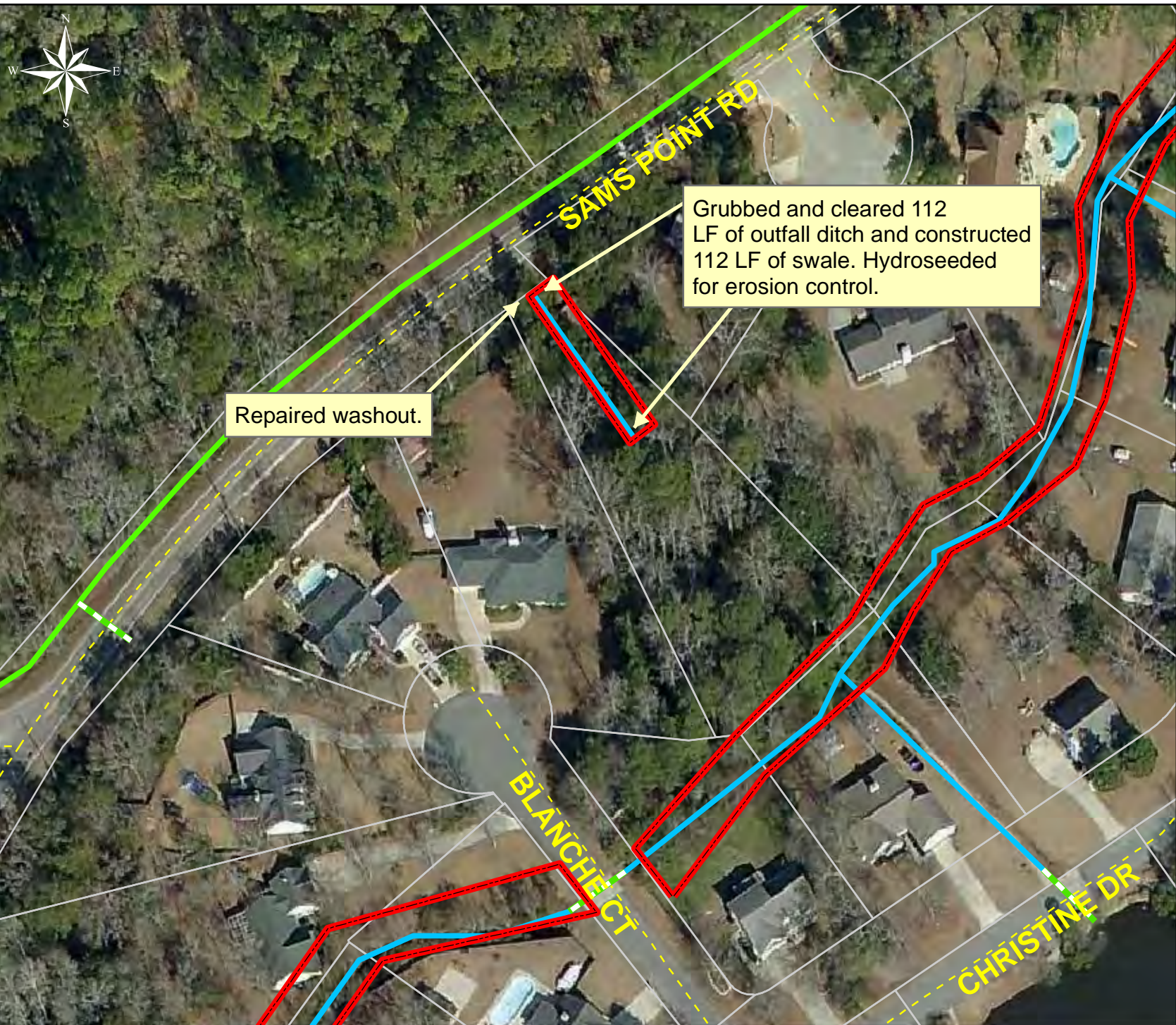


During



After





Project: Sams Point Road

Activity: Drainage Maintenance

Project #: 2012-004

Township: Lady's Island

Completed: July 2011

Legend

Drainage Type

- River
- Stream
- Outfall
- Lateral
- Lateral Pipe
- Roadside
- Roadside Pipe
- Crossline
- D/W
- Access
- Piped
- Bleeder
- Easements
- Parcels



1 inch = 91 feet